



3 Risborough Road, Maidenhead, SL6 7BJ
£410,000 Freehold

CHAIN FREE. A delightful two bedroom semi-detached cottage, situated within walking distance of Maidenhead town centre and Elizabeth Line station giving fast access to central London.

Entrance Hall

Sitting Room

Charming fireplace, sash window, built-in shelves.

Kitchen/Family/Dining Room

Modern and well-equipped kitchen features a range of fitted base and eye-level cabinets, skylight window, solid worktops, space for washing machine and fridge/freezer, patio doors leading to private rear garden.

Bathroom

White suite comprising bath with shower over, WC, wash hand basin with mirror over, fully tiled walls, skylight window

Bedroom 1

Decorative fireplace, sash window.

Bedroom 2

Outside

On-street resident permit parking, side access to private rear garden, brick storage shed.

Floor Plan

Approximate Floor Area = 70.5 sq m / 758 sq ft

Risborough Road

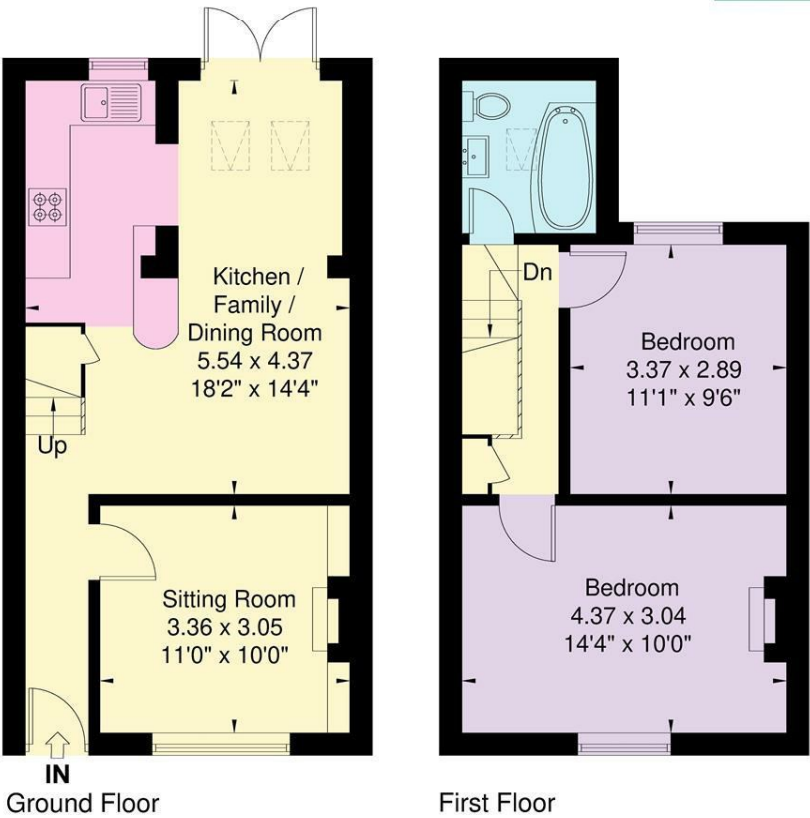
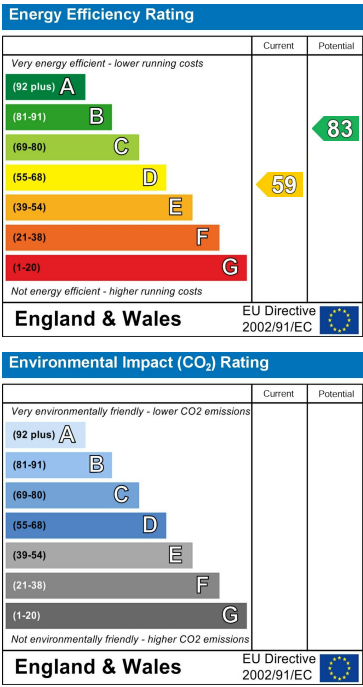


Illustration for identification purposes only, measurements are approximate, not to scale.

Area Map



Energy Efficiency Graph



These particulars, whilst believed to be accurate are set out as a general outline only for guidance and do not constitute any part of an offer or contract. Intending purchasers should not rely on them as statements of representation of fact, but must satisfy themselves by inspection or otherwise as to their accuracy. No person in this firms employment has the authority to make or give any representation or warranty in respect of the property.